

THE BUG REPORT

A Publication of the Greater South Bay PC Users Group

GS-BUG, Inc.

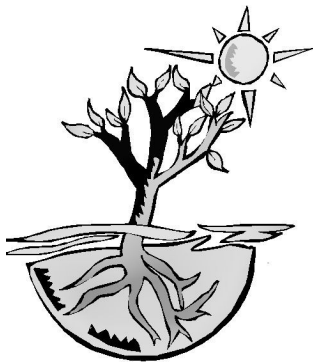
<http://gsbug.apcug.org>

Volume 14, Number

May 2009

INSIDE

Club Details	2
Officers and Fine Print.....	2
President's Thoughts.....	3
Internet Talk.....	5
Internet SIG.....	9
Southwest Computer Conference	9
Moving on to <i>Vista</i> - Part 13.	10
Ad Rates.....	11
SIG Meetings	11
Membership Application	11
Monthly Calendar	12

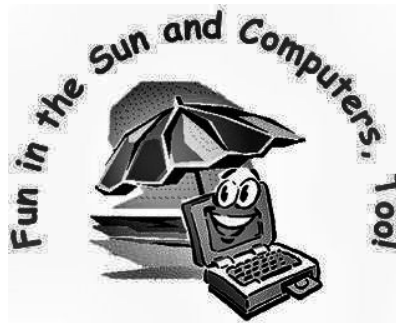


Happiness often sneaks in through a door you didn't know you left open.

--John Barrymore,
American actor

May 29-30-31

Southwest Computer Conference



A Welcome Bag and T-shirt are also included in the registration fee.

Early Bird registration is \$60, postmarked by May 15. May 16 through the conference the fee is \$75.

Please see www.theswcc.org for more information.

(If you haven't made a hotel reservation, and can't get our conference rate of \$109, ask for the AARP rate. It's also \$109)

A special event is being held on Thursday, May 28, hosted by Jerry & Judy Clarke, Patricia & Al Hill and Jim & Barbara Gates. It's a day trip to the Viejas Casino and 60-store discount mall across the street from the casino.

(See *SWCC*, page 9)

The 16th annual Southwest Computer Conference is being held May 29, 30, and 31 at the beautiful Town and Country Resort & Convention Center in San Diego.

Everyone attending the conference will have the opportunity to attend technology company presentations and tech sessions as well as workshops to enhance their computer skills.

They will also be able to talk with the vendors at the Saturday night Expo and buy products at a conference discount rate.



Greater South Bay PC Users Group

*A member of
Association of Personal Computer User Groups*



MEMBERSHIP

Membership is available for twelve months from the date of joining. Membership rates:

Individual	\$36.00
Student	\$18.00
Family	\$48.00
Newsletter Subscription	\$18.00

Checks payable to GS-BUG, Inc.

Mail to:

GS-BUG, Inc. — Membership
3623 W 227th St.
Torrance, CA 90505

THE BUG REPORT

A monthly publication of GS-BUG, Inc. Reproduction of any material herein by any means is expressly prohibited unless written permission is granted. Exception: Articles may be reprinted by other user groups in unaltered form if credit is given to the author and the original publication.

SUBMISSIONS

All submissions to the GS-BUG Report must be unformatted on PC disk or e-mail (no hardcopy). Limit formatting to bold or italicizing. We reserve the right to edit as necessary for space consideration. Art work submitted must be in a common graphics format (.jpg, .tif, etc.)

DISCLAIMER

All opinions herein are those of the individual authors only, and do not reflect the opinions of GS-BUG, Inc. The group does not intend to endorse, rate or otherwise officially comment on products available and readers are cautioned to rely on the opinions presented at their own risk.

Articles are compiled without verification of accuracy or application to a special task or computer. GS-BUG, Inc., its contributors and the editor do not assume any liability for damage arising out of the publication or non-publication of any advertisement, article, or any other item in this newsletter.

GENERAL MEETING

General meetings are held at 7:30 p.m. on the first Monday of the month at the Salvation Army Facility, 4223 Emerald Street (at the corner of Emerald and Earl Streets), Torrance.

BOARD OF DIRECTORS

President Garry Sexton 310-373-3989
uags@aol.com

Vice-President Tom Tucknott 310-530-4992
ttucknott@socal.rr.com

Secretary

Treasurer Jim Corones 310-322-1441
jcorones1@juno.com

Librarian

Membership

Program

Web Master Shelley Miller 310-541-6796
seamil19@verizon.net

Directors at Large

John Hanson 310-643-9882
ba030@lafn.org

Virginia Pfiffner 310-374-2410
vpfiffne@elcamino.edu

Greg Neumann Gbug_caller@aol.com

Newsletter Staff

Editor Marian Radcliffe 818-249-1629
MarianRad@1stNetUSA.net

Proofreader Virginia Pfiffner

President's Thoughts

By U. A. Garred Sexton

While lecturing to a computer group recently, I wanted to be able to look at the audience while making my presentation instead of sitting down to use the laptop.

A podium seemed to be a good solution. In my search for what was available on the market, my needs for portability, light weight, and height of the platform were not met. The only solution I could come up with was to design my own podium. The design evolved as I thought about the requirements.

Using the materials I had on hand, I made the podium and have used it many times without any desire to modify the design. You should be able to build it in an afternoon. You will be able to assemble and disassemble it in minutes and put the collapsed pieces in a fabric container for easy portability.

If you have an interest in such a piece of equipment here are the details:

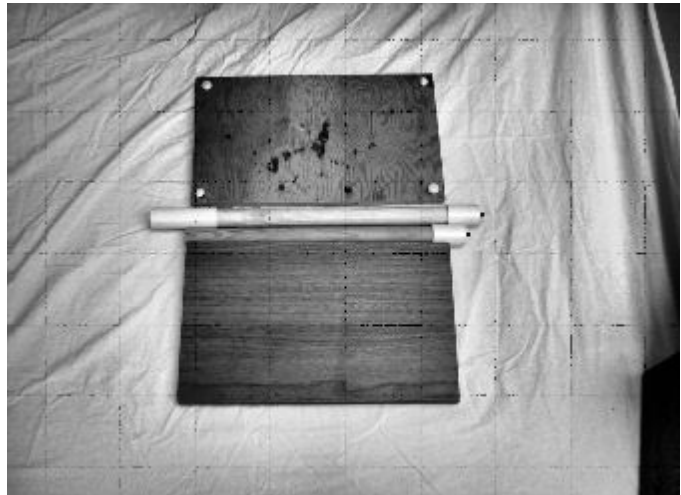
1. The top and bottom pieces are $\frac{3}{4}$ inch plywood, 12 inches by 20 inches each. A small lip of scrap wood can be attached to the bottom of the slanted top piece to prevent the laptop from slipping off its perch.

2. The center post is a wooden closet hanger pole that is a total of 43 inches in length (adjusted to your height) which I cut about in half. (The placement of the cut is not critical).

3. In the pictures, the three white collars are $1\frac{1}{2}$ inch Schedule 40 PVC pipe that fit snugly over the wooden pole. One collar is 5 inches in length to be used as a center coupling. The other two collars are 2 inches in length and will be used on

the ends of the wooden pole. The center collar is attached with a small nail on one end to prevent the collar from moving during assembly and disassembly.

Now that you have the necessary wood and plastic parts ready, you will need the following metal parts to complete the project.

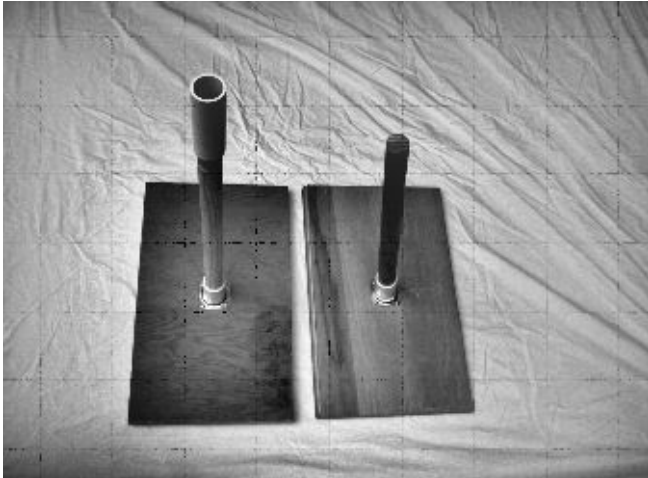


The hardware pieces at the top and bottom of the center post are:

- 2 hanger bolts $\frac{3}{8}$ – 16 3 (at Lowe's).



- The top screw plate is angle plate #2752 for \$1.68 (at Lowe's)
- The bottom screw plate is straight plate #2751 for \$1.68 (at Lowe's)



The center pole height is set so I can stand and read the laptop without looking down.



My Traveling Experience May Help You

While traveling on American Airlines I had something very strange happen to me.

After going through security and putting the laptop computer back in the carry on container, I entered the jet way with my traveling companion who had the same type of computer carry on.

I was then told that the second wheeled carry on had to be checked! It was only moments later when I rushed back to retrieve the laptop and the case was no where in sight.

The attendee was telling every one that all wheeled carry ons had to be checked.

Upon arrival at our destination, it was obvious that the case had been opened. When the contents were checked, the laptop was missing as well as an AC adapter, thumb drive, camera and camera battery charger.

I went immediately to the baggage claim area to report the loss, and noticed there was a sign stating that AA was not responsible for computers, electronic equipment, damage to luggage etc.

Then I was told, "Sorry," and given a contact for AA.

I wrote AA promptly and as yet have not had a response.

The moral of the story:

Do not let a computer out of your control.

U.A. Garred Sexton

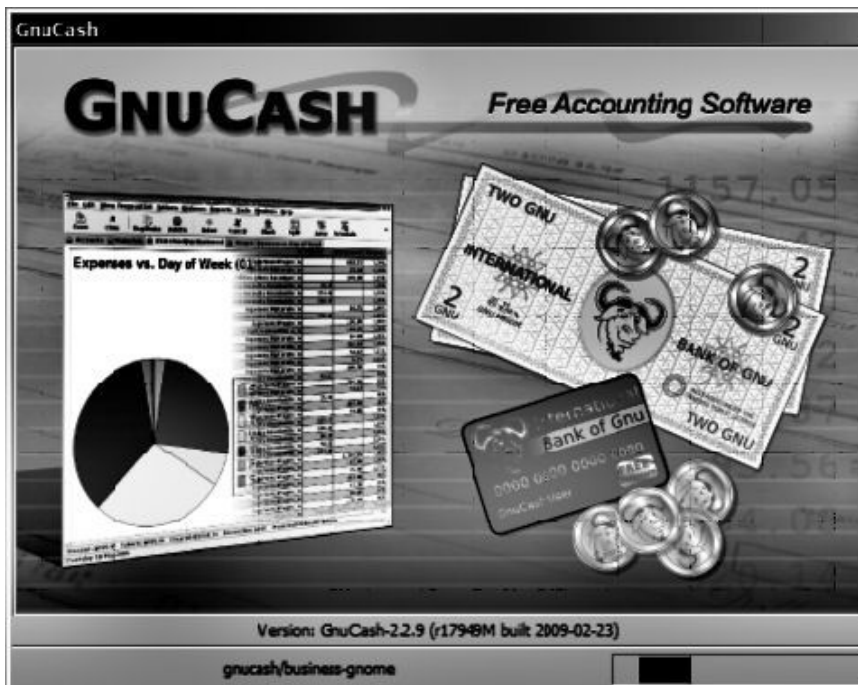
Internet Talk

By Frank Chao
Member, GS-BUG

This is the 115th "Internet Talk" article for *The Bug Report*, a publication of the Greater South Bay PC Users Group (GSBUG). Liz and I hope that you are making full use of your computer's Internet connection. More and more free services and programs are now available.

Here are more for you to try:

GNUCASH



Many GSBUG members are users of the various versions of Intuit's *Quicken* and *QuickBooks* for managing their personal and business finances. After 9 years of development by open-source programmers, a free, open-

source software application called *GnuCash* is finally a viable alternative to *Quicken* and *Quickbooks*! To get yourself a free copy, go to:

<http://www.gnucash.org>

Unlike *Quicken* and *Quickbooks*, *GnuCash* runs on every operating system and makes it easier to transition or interoperate between *Windows*, *Macintosh*,

Linux, and *Unix*.

Unlike the very immature versions of *GnuCash* that were released in prior years, *GnuCash* can now accept downloads in the *Microsoft Money.OFX*

format. This format is universally available from the Web sites of all banks, credit card companies, and stock brokers.

After you download and install *GnuCash* and start it for the first time, it will look like this: Then, it will run you through a 'New Account Hierarchy Setup' Wizard. (Druid is the same as Wizard).

Click on the 'Forward' button.

Click on the 'Forward' button again.

And click on the 'Forward' button again.

Click on the 'Forward' button one more time.

Click on the 'Apply' button. You will now be shown your hierarchy of accounts:



Next, go to the 'Menu bar' and click on 'File' and then on 'Save.'

Type in a name for your 'Account Hierarchy:'

Then click on the 'Save' button. You will now be back at the 'Account Hierarchy:'

Click on the '+' to the left of 'Assets:'

Click on the '+' to the left of 'Current Assets:'

Click on 'Checking Account' in order to highlight it:

Go to the Menu bar and click on 'Edit' and then 'Edit Account.'

After filling in the 'Edit Account' box with the name of your bank and other pertinent information, click on the 'OK' button.

If you double-click on 'Checking Account' (or whatever you named it) in the 'Account Hierarchy,' the register for the checking account will be displayed:

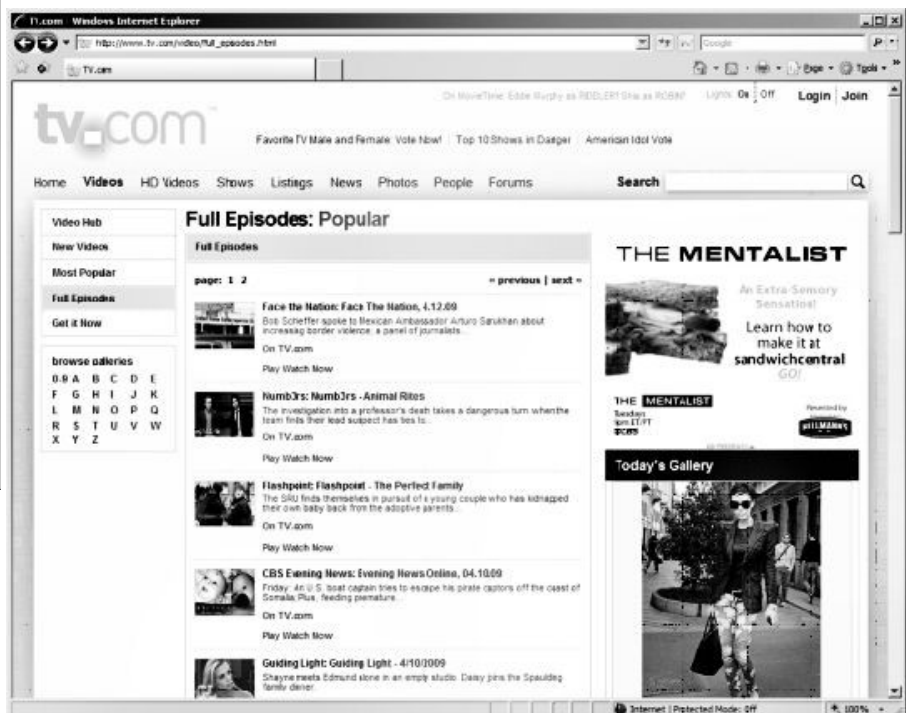
You can either enter transactions manually or download them from the Web site of your bank. If you go to the Web site of your bank, you can download a *Microsoft Money*.ofx* file of history and transactions to your local hard drive. Then you can use 'File' / 'Import' to import them into the appropriate 'account' register in *GnuCash*:

To learn more about *GnuCash*, click on 'Help' and then on 'Tutorial and Concepts Guide.'

TV.COM WEB SITE

You can watch some television shows and a few movies for free at <http://www.tv.com>.

Their home page looks like this:



You can view full episodes of recent television programs at <http://www.tv.com/video/fullepisodes.html>

Now you know why Liz and I retired from our jobs !

FREE STORAGE ON THE WEB--PART 5

ADRIVE

This is the fifth installment in our series of discussions about storing files for free on the Internet.

Liz and I often hear tales of woe from computer users due to hard drive or software failure. In the latest fiasco, one of my relatives lost \$400 worth of *Itunes* music files when his computer hiccupped during a power failure.

Don't take chances with your data files and photo files. Please

back up your data files now before you lose them due to hardware, software, or operator error.

This month, Liz and I obtained a free storage account at *ADrive*.

Their Web site is located at: www.adrive.com

They have both free and non-free accounts. Their free accounts provide a humongous 50 gigabytes of storage. They are a bit harder to use than the previous four online storage sites that we have already discussed in this series.

The key features for a free account are:

Total storage space = 50 Gigabytes

Maximum single file size = 2 Gigabytes

Maximum monthly bandwidth = not stated on *ADrive* Web site

The maximum monthly bandwidth is the total amount of data that you (and others that you designate) upload to, and download from, your free account.

ADrive does not limit the types of files that you can store.

The home page of the *ADrive* web site is below.

Click on the ‘Sign Up’ tab and you will get an online form to sign up for an account.

Use the drop-down arrow on the right of the white form field that is next ‘Please Select Your Plan’ to select the ‘Basic - Free’ account. Then, fill in the rest of the form and click on the ‘Continue’ button.

Now, go to your e-mail Inbox

and locate the ‘Welcome to *ADrive!*’ message that they have just sent to you. Inside this e-mail message you will find a hyperlink that you can click on to activate your new account.

Now go to <http://www.adrive.com> and sign in with your e-mail address and password. After you click on the ‘Sign In’ button, you will see a page that contains a section that looks like a *Windows Explorer*.

Click on the ‘Create Directory’ button to create a folder at your storage space at *ADrive*. Enter a name for your new folder, as requested.

Click on the ‘Upload Files/ Directories’ hyperlink to upload data files from your computer to your account at *ADrive*. The first time that you click on this button for any specific browser in a specific computer, you will probably get a security warning as follows on next page:

Click on its ‘Run’ button.

After a second or two, you will get the online form for uploading files or folders to your *ADrive* account.

Now, click on the ‘Add’ button and you will get a ‘Browse’ box.

Navigate to the files or folders that you wish to upload. Then click on the ‘Open’ button.

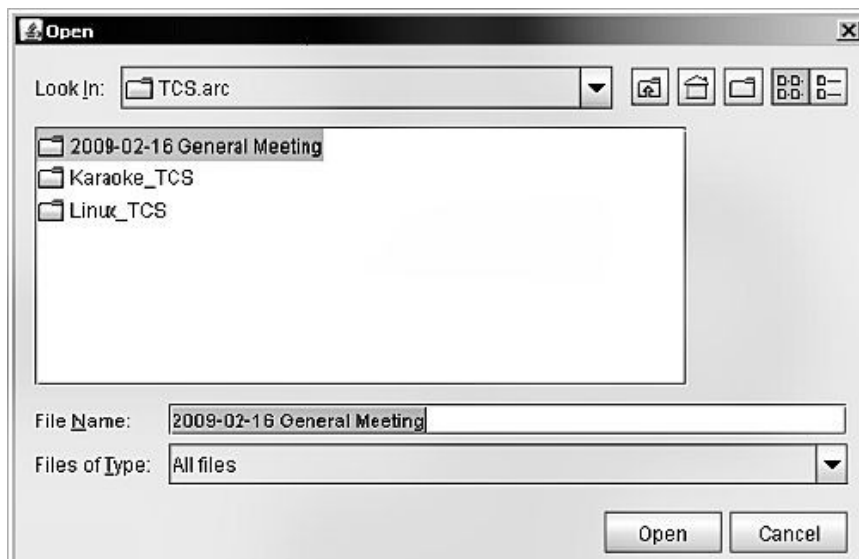
The ‘Upload files to:’ list will now show all of the individual files that you have selected, regardless of whether you selected





a single file or a directory that contains other files and/or direc-

To share a file:
Right click on the file that you



tories:

ADrive allows you to shares files with others.

At the present time *ADrive* does not allow you to share an entire online folder with others.

You have to share each shared file individually. The developers of *ADrive* stated that they plan to implement folder sharing in the future.

wish to share.

Then click on the 'Share' button on the dialog box that pops up.

Click on the 'Yes' button in the 'Confirm Share' dialog box.

Then right click on the file (that you are sharing) again.

A 'Public File Details' box will pop up.

Click on the 'Email a Friend'

button to notify persons whom you want to share the file with of the URL where they can access the file.

ADrive has one feature that differentiates it from the other free cloud-based storage services:

According to <http://online-storage-service-review.toptenreviews.com/adrive-review.html>

"*ADrive* provides access to the Zoho Online Document Editor so that you don't even need to download your files to a computer hard drive to access them and edit them. This is a wonderfully useful tool, especially if you are using a public or bare-bones computer that might not have document editing software. Plus, it's just more convenient even if you do have editing software. You can make changes right in Zoho and save; you're done. This feature alone makes us love *ADrive*, regardless of what else it has to offer."

Using the online 'Web application' called *Zoho Writer*, which is integrated into *ADrive*, you can edit any .doc format (Microsoft *Word*), .html format, .sxw *OpenOffice* text document format, .rtf 'Rich Text' format, or .txt format. Using *Zoho*, you can create and edit these types of document files without having word processing software on the computer that you are using. The official blog of the *ADrive* company is located at <http://www.adrive.com/community>

This web page keeps their users informed about pending improvements and modifications to the various free and non-free levels of storage service.

Let me know if there are any online file storage services that you are particularly fond of and we will describe them in future articles in this series.

If you have any questions or problems, I can be contacted by the following methods:

1. Send me e-mail at: fchao2@yahoo.com

2. Send 'snail' United States Postal Service (USPS) mail to Frank Chao
405 E. Wetmore Rd. #117-484
Tucson, AZ 85705-1792

Or sell your computer and take up gardening instead!!

(SWCC from page 1)

The reservation deadline is May 25 and participants receive a Casino fun book and discount coupons for the stores.

Don Baker of Klassic Specialties has announced he is giving all SW2009 attendees a 10% discount on his already low-priced ink and paper supplies to be delivered at the Saturday night Expo.

This offer also saves on shipping costs. Place your order at www.klassicspecialties.com prior to May 28 and indicate "SWCC2009" in the comment section of the order form. The discount will appear on the invoice delivered with the product. (Orders not picked up will be subject to any subsequent shipping charges that may apply.)

Warcraft — Wrath of the Lich King with a complete set of Brady Games Official Strategy Guides (\$50).

Some of the tech sessions / workshops are: Smart Computing magazine; Nero multimedia suite – photo editing, burning CDs (videos, music, data); User Group Relations – a webinar on backing up with Acronis; Steganos USB encryption; demystifying inkjet printing with Klassic Specialties; Firetrust (all the way from New Zealand) spam blocking software; Laptop Ergonomics with LapWorks; Computer Forensics; the Kindle; Spring Clean Your Computer; the I's – iPhone, iPod, iTunes – Why they are so fun; Virtual PC, Photo Story and Podcasting; Computer Security and Free Security Software; Is it time to put a penguin in your Computer, featuring Ubuntu; as well as Is there a Mac in your future.

Internet SIG

Since I will be attending the SWC Conference this month I will not be here for the Internet SIG. Unless we have another host there will be no May Internet SIG. I will be taking vacation during June, July, and August and would like to get volunteers to host the SIG for any one of these months. The SIG is held the fourth Thursday of the month from 7 to 9 p.m. Contact me (ttucknot@socal.rr.com) or Garry Sexton if you can host at least one of the summer Internet SIG meetings.

Bruce Pechman, the Muscleman of Technology, will kick off the conference on Friday afternoon at 3:00 p.m. with his popular gadgets workshop. Bruce is frequently seen on the KUSI "Good Morning San Diego" show, as well as the KTLA "Morning Show" in Los Angeles, keeping viewers up-to-date on the latest technology.

He will have many cool prizes and the three we can announce now are the Kitchen Technology Center (\$399), Xbox 360 Console Game System (\$199), and the very limited Special Collector's Edition of *World of*

To complete the conference and casino day trip registration forms plus find out more information about the conference, go to: www.theswcc.org.

See you in San Diego,

Judy

Judy Tylour, Chair
Southwest Computer
Conference

*16 years of bringing
technology to you*

Article

Moving on to *Vista* - Part 13

by Neil Stahfest
Tacoma Area PC User Group, WA
www.tapcug.org
ncstahfest@msn.com

The chances are the first peripheral device you purchased for your computer was a printer.

You may have even received a 'free' printer when you purchased your computer. *Vista* makes it easier than ever to connect a new printer to your computer. The Plug-and-Play feature really works (unless, like me, you have an old laser printer that *Windows Vista* does not support. :-()).

So you connect your printer, follow the Printer Wizard's directions, it works and you're happy.

But wait. Have you examined your printer to discover all of its functions? Did you know that many modern printers, even the inexpensive models, can print on both sides of the paper, print sideways on the paper (called landscape mode), print in gray scale as well as in color and allows you to control print quality (to save ink when you don't need high quality print).

Here's how to find out what you can do and manage it.

Create or open a document using your favorite word processing program or *WordPad*. At the top of your screen, click on 'File'

and then scroll down to 'Printer Settings' and click again. When the 'Printer Setup' window opens, click on the 'Properties' button. At this point what you see depends largely on your individual printer.

In the case of my HP printer, I see a window with tab labeled 'Paper/Quality,' 'Finishing,' 'Effects,' 'Basics,' 'Color' and 'Services.' Selecting the appropriate tab allows me to select print quality (Normal, Draft, Enhanced, etc.), Portrait or Landscape mode, page order, color, single or two sided paper printing and many other options. In the case of my HP printer, when I select two sided paper printer, the printer prints on one side of the paper and then an on-screen message shows me how to reinsert the printed sheet in the paper tray to print of the other side.

These print options are actually determined by the printer, not *Windows*. *Windows* just provides the means to control the printer's features.

Windows frequently provides more than one way to do the same thing.

Desktop icons provide a shortcut to run programs listed in the Start

Menu. You can easily create new desktop icons by opening the Programs section of the Start Menu, Selecting a program, right clicking on it and drag it to a blank area on your desktop. When you release the right mouse button a short menu appears with the option to 'Create Shortcuts Here.' Select it, and left-click once to create the icon. You can rename this icon to anything you wish.

If you right-click on a desktop icon, one of the menu option is 'Properties.' Select 'Properties' and left-click once. Under the 'Shortcut' tab notice the entry line labeled 'Shortcut key.' It probably contains the entry 'None.' By selecting a suitable key (letter or number), you can create a key combination shortcut to your program. It's a convenient way to access frequently used programs, spreadsheets and documents.

Before we leave this menu, notice the button labeled 'Change Icon.' When you left-click on this button you'll see an array of icons that you can use to substitute for your default icon. Pick an icon, click on the 'Okay' button and then click on 'Okay' again. Your new icon will appear on the desktop.

GS-BUG Membership Application

New Renewal Update

I hereby apply for membership in the Greater South Bay PC Users Group. I understand I will be entitled to attend meetings, receive the monthly newsletter and be eligible for special offers that become available from time to time.

Name (**Please Print**) First _____ Last _____

Address _____

City, State, Zip +4 _____

Phone _____ E-Mail _____

Individual \$36.00; Student \$18.00; Family \$48.00; Newsletter Subscription \$18.00

Please mail check to: GS-BUG, Inc.—Membership; 241 Via Los Miradores, Redondo Beach, CA 90277-6761

CLASSIFIED ADS

Members may place personal ads of three (3) lines for free. All other business and non-members ads: \$2.00 per ad for 3 lines. Ads must be prepaid, camera-ready copy, and received by the 15th of the month preceding publication.

ADVERTISING RATES

GS-BUG accepts commercial advertising from members and outside businesses at the following rates:

Business Cards (3 1/2" x 2") \$15.00
1/4 Page Ad \$25.00
1/2 Page Ad \$35.00
Full Page Ad 60.00

All prices are for single issue only. All advertisements must be prepaid and received by the 15th of the month preceding publication. All artwork must be camera ready copy.

Checks payable to GS-BUG, Inc.

Mail to:

GS-BUG, Inc.—Advertising
3623 W. 227th St.,
Torrance, CA 90505-2522

LIBRARY

Shareware disks are available at the General Meeting for \$3.00 per disk and \$5.00 per CD. Charges are to recover duplication and distribution costs.

SIG MEETINGS

Daytime Hardware First Tuesday After General
1—4 p.m. Torrance Scout Center
Bob Hudak rsh532@aol.com
Call for Appointment 310-323-0579

Digital Imaging First Three Tuesdays
9—12 noon Torrance Scout Center
Greg Neumann Gbug_caller@aol.com

Windows XP 3rd Thursday
7:00 p.m. Garry Sexton's
Virginia Pffifner 310-374-2410
vpffifne@elcamino.edu

Internet 4th Thursday
7:00 p.m. Garry Sexton's
Tom Tucknott 310-530-4992
ttucknott@socal.rr.com

SIG Meeting Addresses

Torrance Scout Center
2375 Plaza Del Amo, Torrance

Garry Sexton's
3623 W. 227th St., Torrance

The Bug Report

The Greater South Bay PC Users Group

3623 W. 227th St.

Torrance, CA 90505

May 2009						
Sunday	Monday	Tuesday	Wednesday	Thursday	Friday	Saturday
					1	2
3	4 General Meeting	5 SIG Meetings Digital Imaging Daytime Hardware	6 Board Meeting	7	8	9 Newsletter Deadline
10	11	12 SIG Meetings Digital Imaging	13	14 NO SIG Meeting <i>Windows XP</i>	15	16
17	18	19 SIG Meetings Digital Imaging	20	21 NO SIG Meeting Internet	22 Southwest Conference	23 Southwest Conference
24 /31 South-west Confer- ence	25	26	27	28	29	30